

Ti20 Thermal Imager



Fluke Ti20

The thermal imager for everyday maintenance and inspection

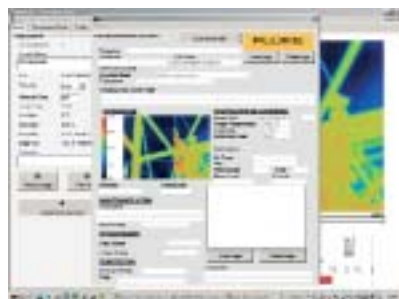
The Ti20 brings the powerful diagnostic capabilities of infrared thermal imaging technology within reach of a wider range of industrial applications. The unit is fully radiometric for detailed temperature analysis and tracking of critical components. It is easy to operate by the service and maintenance personnel who know and understand the equipment best.

- 128 x 96 detector provides a clear thermal image with accurate temperature measurements up to 350 °C
- Fully radiometric for detailed temperature analysis and tracking of critical components
- Large color LCD displays uncluttered image with data and routing instructions
- Facilitates one-handed point, shoot and image capture operation
- Assists fast inspections with clear on-screen step-by-step routing instructions
- Protected against dust and moisture (IP54 rated) to withstand harsh industrial environments
- Provides 3 hours continuous operation per battery charge (2 battery packs delivered with the unit)
- Includes InsideIR™ software for unlimited use by every member of the maintenance team (no software license fees)
- Comes complete with all necessary accessories and professional application training material to ensure a fast return on investment

Specifications

(Check the Fluke web for detailed specifications)

Imaging performance	
Field of view (FOV)	20° horizontal x 15° vertical
Spatial resolution (IFOV)	2.73 mrad
Min focus distance	0.15 m
Thermal sensitivity (NETD)	≤0.2 °C at 30 °C
Image frequency	9 Hz
Focus	Manual
Detector type	128 x 96 Focal Plane Array, Uncooled Microbolometer
Spectral band	7.5 µm to 14 µm
Temperature measurement	
Calibrated temperature range	-10 °C to 350 °C
Accuracy	±2 °C or 2% (whichever is greater)
Measurement modes	Auto and manual level and span adjustment
Emissivity correction	0.1 to 1.0 (0.01 increments)
Image presentation	
Digital display	3" large color LCD
LCD backlight	Selectable On/Off
Palettes	Grayscale, reverse grayscale, rainbow, ironbow
Image and data storage	
Storage medium	50 images internal flash
File formats supported	14 bit measurement data included. Exportable JPEG, BMP, GIF, PNG, TIFF, WMF, EXIF, EMP
Interfaces and software	
Interface	USB 2.0 (High speed)
Software	InsideIR; Full analysis and reporting software included
Laser	
Classification	Class II
Controls and adjustments	
Set-up controls	Date/time, temperature units C/F, LCD intensity (high/normal/low),
On-screen Indicators	Battery status, real time clock and center point temperature, range and span indication and high and low alarm settings



Quickly and easily create reports with the InsideIR software

Included Accessories

- Hard carrying case
- Soft-sided carrying case
- 2 Rechargeable battery packs
- 1 AA battery case
- AC/DC power adapter
- USB communication cable
- Wrist strap
- InsideIR reporting and analysis software
- Interactive CD with training materials
- Getting Started Guide

Ordering Information

Fluke Ti20 Thermal Imager

Battery life: 3 hours per rechargeable battery (2 included)

Water and dust resistant: IP54

Size (HxWxD): 254 mm x 102 mm x 178 mm

Weight: 1.2 kg

One Year Warranty

Recommended Accessories



Ti20-CC
Car charger



Ti20-Visor
Sun Visor



Ti20-RBP
Rechargeable battery pack