

Ti40/Ti50 Series IR FlexCam® Thermal Imagers

FLUKE®

New



Fluke Ti40, Ti45, Ti50, Ti55

New



Fluke Ti40FT, Ti45FT, Ti50FT, Ti55FT

The thermal imagers for professionals demanding the best

The Fluke IR FlexCams produce the industry's largest and sharpest thermal images. The FT models feature innovative IR-Fusion technology which links a real world visual image with a thermal image.

The innovative 180° articulating lens makes it possible to view and capture images in areas with poor accessibility.

Features

	Ti40	Ti45	Ti50	Ti55
180° articulating flexible lens to view images in every situation	•	•	•	•
Choice of 3 interchangeable lenses to cover every application	•	•	•	•
Large 5" high contrast color LCD for a clear picture independent of lighting conditions	•	•	•	•
Fully radiometric for detailed temperature analysis and tracking	•	•	•	•
SmartFocus for best image quality and accurate temperature measurements	•	•	•	•
Windows® CE based menu structure for ease of use	•	•	•	•
Personalized instrument set-up for multiple use	•	•	•	•
CompactFlash memory cards to store over 1000 IR images plus fully radiometric temperature data	•	•	•	•
SmartView reporting and analysis software included	•	•	•	•
AutoCapture for making intermittent problems visible		•		•
On-board analysis functions		•		•
User defined text annotations for simplified reporting		•		•
Built-in visible light (digital) camera	FT model	FT model	FT model	FT model
IR-Fusion blending thermal and visible light images to easily pinpoint suspect components	FT model PIP only	FT model	FT model	FT model
IR/Visible Alarm		FT model		FT model
Laser pointer for easy targeting	FT model	FT model	FT model	FT model
Flash and torch light for high quality images in dark environments	FT model	FT model	FT model	FT model

Included Accessories

- Heavy duty carrying case
- 2 rechargeable battery packs
- Battery charger
- AC adapter (for Ti45 and Ti55 only)
- Video cable
- 512 MB compact flash card
- Compact flash card reader and USB cable
- PCMCIA compact flash card reader
- Neck strap
- SmartView reporting and analysis software on CD
- User manual on CD

Ordering Information*

- Fluke Ti40-20 IR FlexCam Thermal Imager
- Fluke Ti40FT-20 IR FlexCam Thermal Imager with IR-Fusion
- Fluke Ti45-20 IR FlexCam Thermal Imager
- Fluke Ti45FT-20 IR FlexCam Thermal Imager with IR-Fusion
- Fluke Ti50-20 IR FlexCam Thermal Imager
- Fluke Ti50FT-20 IR FlexCam Thermal Imager with IR-Fusion
- Fluke Ti55-20 IR FlexCam Thermal Imager
- Fluke Ti55FT-20 IR FlexCam Thermal Imager with IR-Fusion

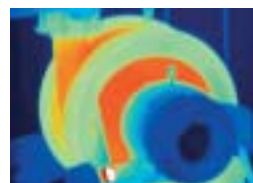
*For ordering information of optional lenses check the Fluke web.

IR-Fusion™ Technology

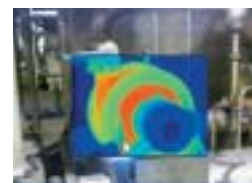


IR-Fusion technology simultaneously captures pixel-for-pixel infrared and visible light images and allows full image optimization with 5 different on-camera as

well as software viewing modes. With the integrated laser pointer visible on the images, precise and accurate (faulty) component identification is very easy.



Full IR



Picture-in-Picture



Alpha Blending



IR/Visible Alarm



Full Visible Light